

Integration Report Package

OVERVIEW

Abstract

The PLA 3.0 Integration Report Package enables users to export results from Quantitative Response Assay Documents and Combination of Assay Results Documents into various easy-to-read file formats such as CSV, INI, XML, JSON and Excel (XML).

Features

- Fast, secure and reliable data export into various formats.
- Simplifies the data exchange between PLA and other systems, such as LIMS.
- Compliant with requirements for regulated environments.

More information on PLA 3.0 Data Acquisition Modules:

www.bioassay.de/data-acquisition

TECHNICAL SPECIFICATION

Type

Report Package

Version

1.2.0 Build 16

(downgrade rights included)

System Requirements

- PLA 3.0.4
- Bioassay Package 23 or higher

Supported File Formats

- .csv
- .ini
- .xml
- .json

Supported Languages

English, German

DELIVERY AND SUPPORT

Release Date

June 4, 2018

Product No.

24040

Scope of Delivery

- Software (CD or download)
- User manual (PDF)

Lifecycle

We will provide support for PLA 3.0 and all related modules until March 15, 2024.

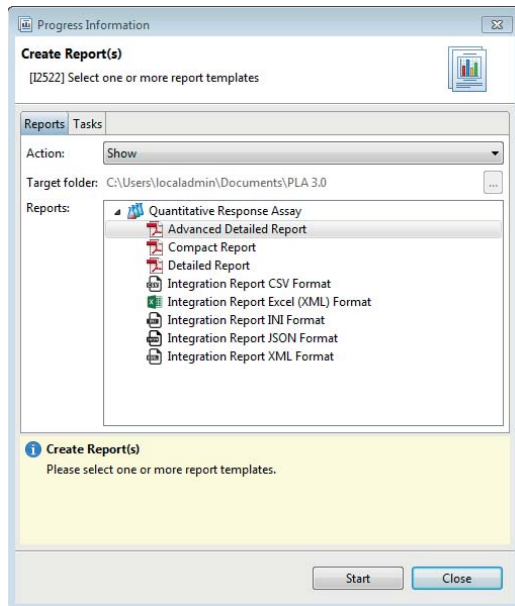
Support and Upgrades

You have access to our PLA support platform at: support.bioassay.de

This module is covered by our PLA Support Contract. The first year is included and the contract can be renewed year by year. To find out more about its benefits, please go to: www.bioassay.de/support-contract

SCREENSHOTS

Creating a report for Quantitative Response Assay.



Creating a report for Combination of Assay Results.

